

TURNING ON CONNECTED CLASSROOM EQUIPMENT

GETTING STARTED GUIDE - CONNECTED CLASSROOM

DECEMBER 2008
VERSION 1.2

TURNING ON VIDEO CONFERENCE (VC) AND INTERACTIVE WHITEBOARD (IWB) COMPONENTS:

The **Equipment Cabinet** contains the various key components which are used for conducting VC. The main power supply to the equipment cabinet **must remain on** at all times, this will ensure that the data and VC equipment will always receive updates.

1. Personal Computer (PC)

The PC and KVM switch are located in the cabinet.

- Press the **Power** button on the front of the **PC**.
- Check **Input I** is active on the KVM switch.

Note: Press the **Select** button to toggle between Input I and II



KVM Switch

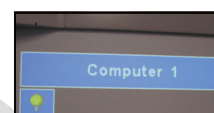
2. LCD monitor

- Press the **Power** button on the **LCD remote** to turn on the LCD monitor

3. Data Projector

The Sanyo data projector can only be operated by using the **Sanyo Remote control**.

- Press the **Power** button on the **Sanyo Remote control** only **once**.
The projector will take 20 seconds or more before an image is displayed on the screen.
The Projector **input source** must be set to **Computer 1** for normal computer use. The **Computer** button on the **Sanyo Remote control** toggles between input sources Computer 1 and 2.



4. Speakers

Two audio speakers are supplied with the one power and volume control for both speakers.

- Turn the rotary dial (Power and Volume control) on the Master speaker to switch the speakers on and set the volume at 50%.

5. Interactive Whiteboard (IWB)

- Panaboard
 - Press the **Power** switch (bottom left hand side of board) to the **ON** position.
- Smartboard
 - No action is required the Smartboard is already active. Smartboard does not have its own power switch.

6. Tandberg Codec (End Point)

The End Point (also known as a Codec) is the Video Conferencing component and is located in the cabinet.

- Press the **OK** button on the Tandberg remote
Note: This will wake up the Tandberg Codec located inside the cabinet.

7. Ready for Use

The equipment is now operational and ready for use.

8. End of Session / Day

When you have finished ensure you log-out and turn off the equipment, eg PC, LCD Monitor, Speakers, IWB.

Notes:

- The Interactive Classroom (IC) desktop computer will auto shutdown at 6pm each day to conserve power.
- When the suite is off line for a period of time, on boot up, it may take a while to catch up on service pack installations sent out by the VC control unit (at St Leonards) - this could impact the provision of VC to the school for a period of time (approx 20-60 minutes).
- **DO NOT** turn off the **main power** supply to the equipment cabinet.

For user support contact DET Service Desk on
1300 338 483